



MICRO ARCH

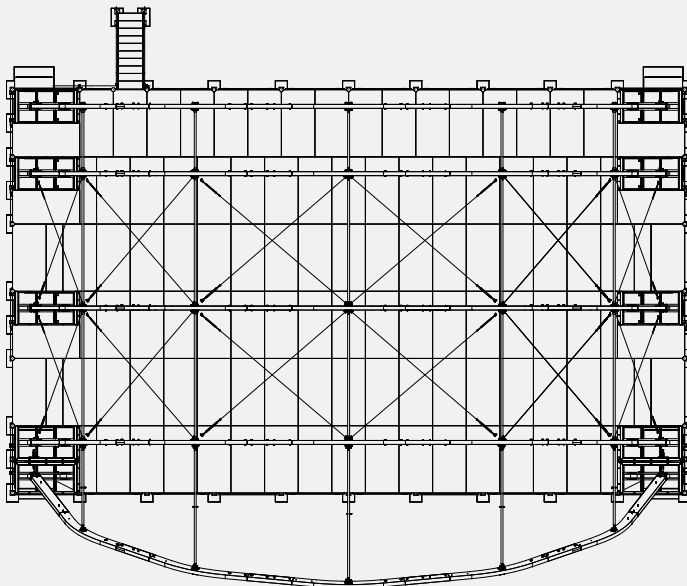
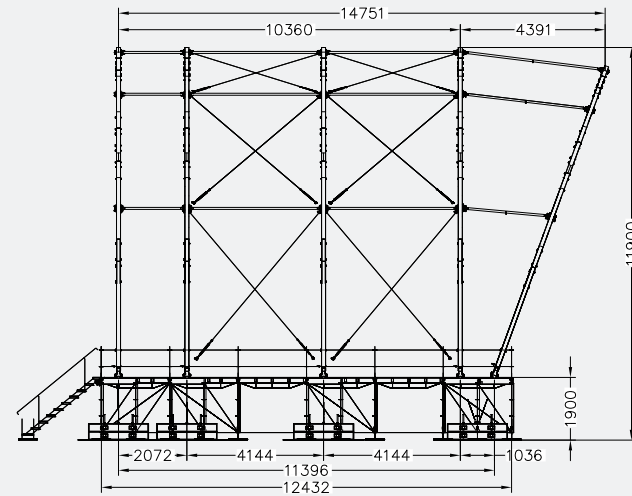
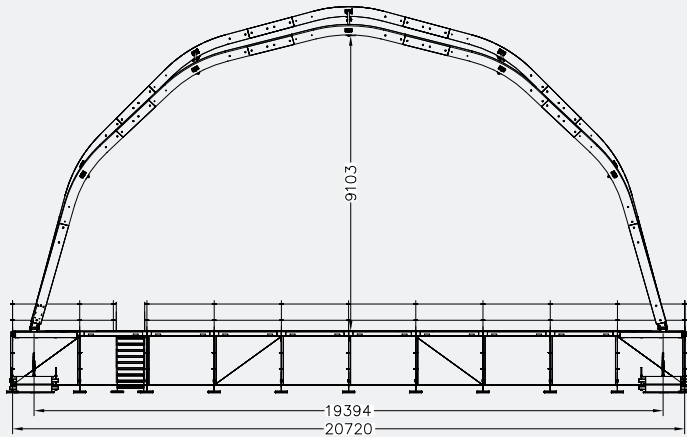
A STAGE WITH AN EYE FOR VISUAL EFFECT



MICRO ARCH

WWW.STAGECO.COM

IF YOU CAN IMAGINE IT, WE CAN BUILD IT



PROPERTIES

Four different arch types available

Span

> 13,6m – 15,6m – 17,4m or 19,4m

Performance area depth

> modular in steps of 4m,
typically between 8m and 16m

Floor height

> adjustable between 1,4m and 2,4m

Clearance

> up to 9m at the centre

Roof capacity (central area)

> up to 2,500 kg/arch

Floor capacity

> 500kg/m²

Suited for every event in search of a striking look

> classical concerts, ...

Available with grey/black or transparent skins

Solid structure with an elegant design that can also be set up as a fully covered temporary hall